

AUCKLAND INTERNATIONAL AIRPORT

AKL

W14 Start of Season Report (International Traffic)

Key Statistics	W13 Operated	W14 -Start of Season	Percentage Change
Air Transport Movements	19,624	19,938	▲ 1.6%
Total Seats	4,504,678	4,688,351	▲ 4.1%
Seats per Passenger ATM	230	235	

Contents

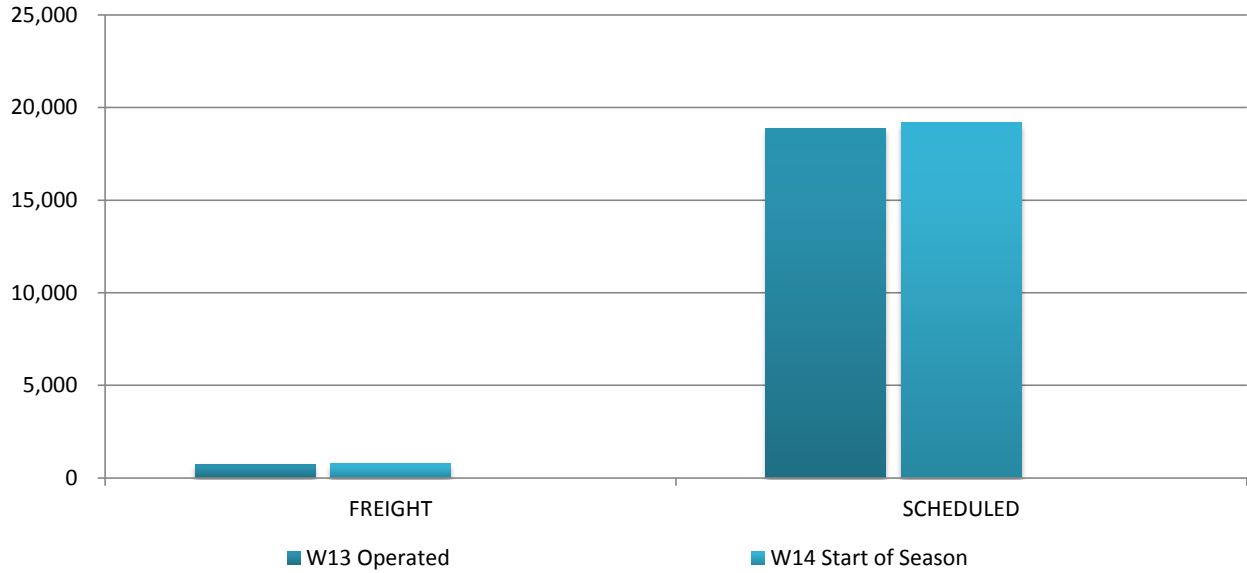
	Page
Movements and Seats by Service Type	2
Peak Week Departure Frequencies by Carrier	3-5
Top 10 Airlines by ATM's and Seats	6
Transit Routes	7
Top 20 Destinations by ATM's and Seats	8
International Terminal - Passengers per 60 Minutes	9-10
International Arrivals - Passengers per 30 Minutes	11
Glossary	12

Data in this report is current as of 20 OCTOBER 2014

No warranty whether expressed or implied as to the completeness, accuracy, fitness for purpose, or satisfactory quality is given by ACL regarding the information in this report, which is provided by third parties. Accordingly, ACL excludes all liability with regard to such data.

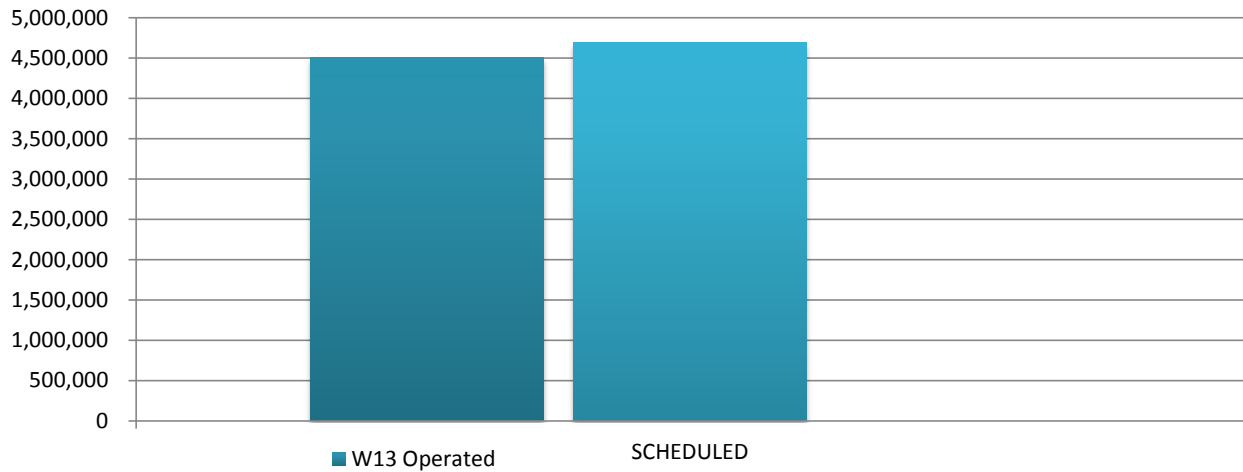
The contents of this report may not be reproduced without the written consent of ACL.

Full Season ATMs by Service Type



	W13 Operated	W14 Start of Season	% CHANGE W13 End vs W14 Start of Season
FREIGHT	733	762	▲ 4.0%
SCHEDULED	18,891	19,176	▲ 1.5%
TOTAL	19,624	19,938	▲ 1.6%

Full Season Seats by Service Type



	W13 Operated	W14 Start of Season	% CHANGE W13 End vs W14 Start of Season
SCHEDULED	4,504,678	4,688,351	▼ 4.1%
TOTAL	4,504,678	4,688,351	▼ 4.1%

AUCKLAND INTERNATIONAL AIRPORT

PEAK WEEK DEPARTURE FREQUENCIES - BY CARRIER

	OPERATOR	AIRPORT		W13		W14		SEATS +/-	ATMS +/-
				SEATS	ATMS	SEATS	ATMS		
CI	China Airlines	TPE	Taipei Chiang Kai Shek	2,395	7	2,784	8	389	1
CI Total				2,395	7	2,784	8	389	1
CX	Cathay Pacific	HKG	Hong Kong Int'L	3,962	14	3,962	14	0	0
CX Total				3,962	14	3,962	14	0	0
CZ	China Southern Airlines	CAN	Guangzhou Baiyun	2,367	10	3,192	14	825	4
CZ Total				2,367	10	3,192	14	825	4
EK	Emirates	DXB	Dubai	10,269	21	10,269	21	0	0
EK Total				10,269	21	10,269	21	0	0
FJ	Air Pacific	NAN	Nadi International	2,152	10	1,880	11	-272	1
		SUV	Nausori International Airport	240	2	240	2	0	0
FJ Total				2,392	12	2,120	13	-272	1
HA	Hawaiian Airlines	HNL	Honolulu International	882	3	882	3	0	0
HA Total				882	3	882	3	0	0
JQ	Jetstar	ADL	Adelaide	540	3	0	0	-540	-3
		MEL	Melbourne	1,953	11	2,880	16	927	5
		OOL	Gold Coast Coolangatta	1,419	8	1,440	8	21	0
		SIN	Singapore Changi	909	3	0	0	-909	-3
		SYD	Sydney Kingsford Smith	1,611	9	1,980	11	369	2
JQ Total				6,432	34	6,300	35	-132	1
KE	Korean Air	ICN	Seoul Incheon Intl	2,555	7	2,555	7	0	0
KE Total				2,555	7	2,555	7	0	0
LA	Lan Airlines	SCL	Santiago Arturo Merino Benitez	1,560	6	1,820	7	260	1
		SYD	Sydney Kingsford Smith	1,560	6	1,820	7	260	1
LA Total				3,120	12	3,640	14	520	2
MH	Malaysia Airlines	KUL	Kuala Lumpur Int'L	1,974	7	1,974	7	0	0
MH Total				1,974	7	1,974	7	0	0
MU	China Eastern Airlines	PVG	Shanghai Pu Dong	0	0	1,048	4	1,048	4
MU Total				0	0	1,048	4	1,048	4
NF	Air Vanuatu	VLJ	Vanuatu	340	2	340	2	0	0
NF Total				340	2	340	2	0	0
NZ	Air New Zealand	ADL	Adelaide	1,176	7	1,176	7	0	0
		APW	Apia Faleolo	1,748	8	1,714	9	-34	1

AUCKLAND INTERNATIONAL AIRPORT

PEAK WEEK DEPARTURE FREQUENCIES - BY CARRIER

OPERATOR	AIRPORT	W13		W14		SEATS +/-	ATMS +/-
		SEATS	ATMS	SEATS	ATMS		
	BNE Brisbane International	3,655	14	3,670	14	15	0
	CNS Cairns	336	2	0	0	-336	-2
	HKG Hong Kong Int'L	2,128	7	2,128	7	0	0
	HNL Honolulu International	702	3	702	3	0	0
	IUE Niue International Airport	168	1	168	1	0	0
	KIX Osaka Kansai International	234	1	0	0	-234	-1
	LAX Los Angeles International	3,138	10	3,442	11	304	1
	LHR London Heathrow	2,324	7	2,324	7	0	0
	MEL Melbourne	4,706	21	5,152	24	446	3
	NAN Nadi International	2,008	10	2,160	8	152	-2
	NLK Norfolk Island Airport	168	1	168	1	0	0
	NOU Noumea	504	3	504	3	0	0
	NRT Tokyo Narita	1,988	7	2,740	10	752	3
	OOL Gold Coast Coolangatta	1,176	7	1,344	8	168	1
	PER Perth	2,128	7	2,114	7	-14	0
	PPT Papeete Faaa	702	3	702	3	0	0
	PVG Shanghai Pu Dong	1,918	7	2,116	7	198	0
	RAR Rarotonga	1,850	9	1,248	5	-602	-4
	SFO San Francisco International	2,653	7	3,208	10	555	3
	SYD Sydney Kingsford Smith	8,251	36	9,012	36	761	0
	TBU Nuku'Alofa Fua'Amotu Internationa	870	4	1,440	7	570	3
	VLI Vanuatu	168	1	168	1	0	0
	YVR Vancouver	1,824	6	1,824	6	0	0
NZ Total		46,523	189	49,224	195	2,701	6
QF	Qantas						
	BNE Brisbane International	2,352	14	2,352	14	0	0
	MEL Melbourne	3,528	21	2,856	17	-672	-4
	PER Perth	470	2	470	2	0	0
	SYD Sydney Kingsford Smith	5,880	35	6,177	36	297	1
QF Total		12,230	72	11,855	69	-375	-3
SB	Aircalin Air Caledonie Int						
	NOU Noumea	558	3	608	4	50	1
SB Total		558	3	608	4	50	1
SQ	Singapore Airlines						
	SIN Singapore Changi	3,941	14	5,292	14	1,351	0

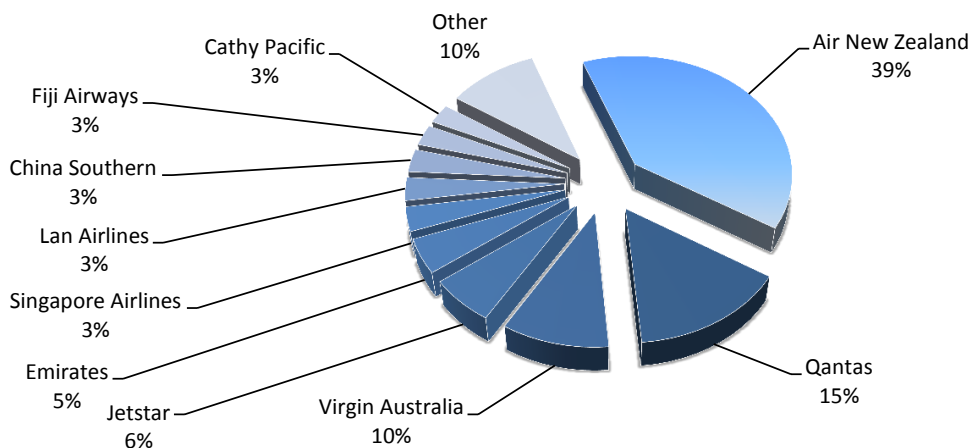
AUCKLAND INTERNATIONAL AIRPORT

PEAK WEEK DEPARTURE FREQUENCIES - BY CARRIER

OPERATOR	AIRPORT	W13		W14		SEATS +/-	ATMS +/-
		SEATS	ATMS	SEATS	ATMS		
SQ Total		3,941	14	5,292	14	1,351	0
TG	Thai Airways International Public Lt BKK Bangkok International	1,460	5	1,168	4	-292	-1
TG Total		1,460	5	1,168	4	-292	-1
TN	Air Tahiti Nui LAX Los Angeles International	882	3	882	3	0	0
TN Total		882	3	882	3	0	0
VA	Virgin Australia						
	APW Apia Faleolo	1,232	7	1,232	7	0	0
	BNE Brisbane International	2,112	12	2,112	12	0	0
	MEL Melbourne	1,232	7	1,232	7	0	0
	OOL Gold Coast Coolangatta	1,232	7	1,232	7	0	0
	RAR Rarotonga	880	5	880	5	0	0
	SYD Sydney Kingsford Smith	1,232	7	1,232	7	0	0
	TBU Nuku'Alofa Fua'Amotu Internationa	352	2	352	2	0	0
VA Total		8,272	47	8,272	47	0	0

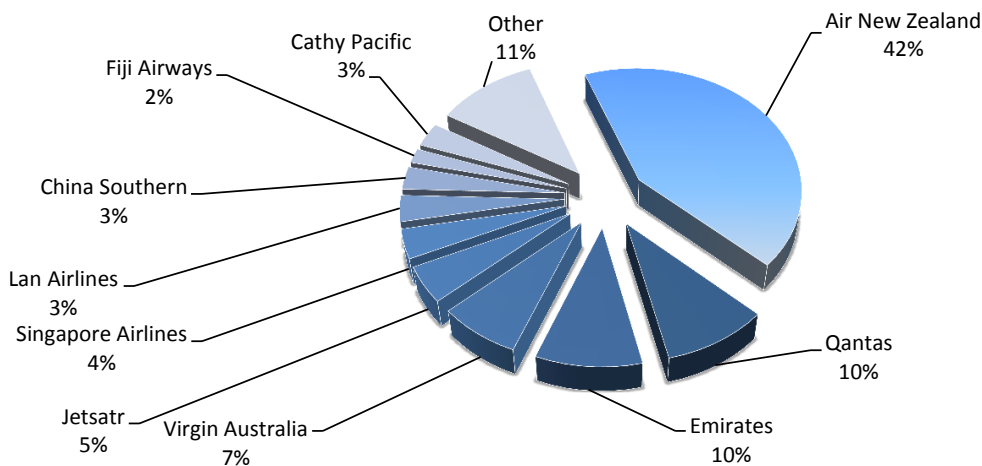
Top 10 Airlines by Air Transport Movements (ATMs)

Airline	Movements
Air New Zealand	7,857
Qantas	2,955
Virgin Australia	1,992
Jetstar	1,239
Emirates	924
Singapore Airlines	652
Lan Airlines	616
China Southern	614
Fiji Airways	557
Cathy Pacific	516
Other	2,016

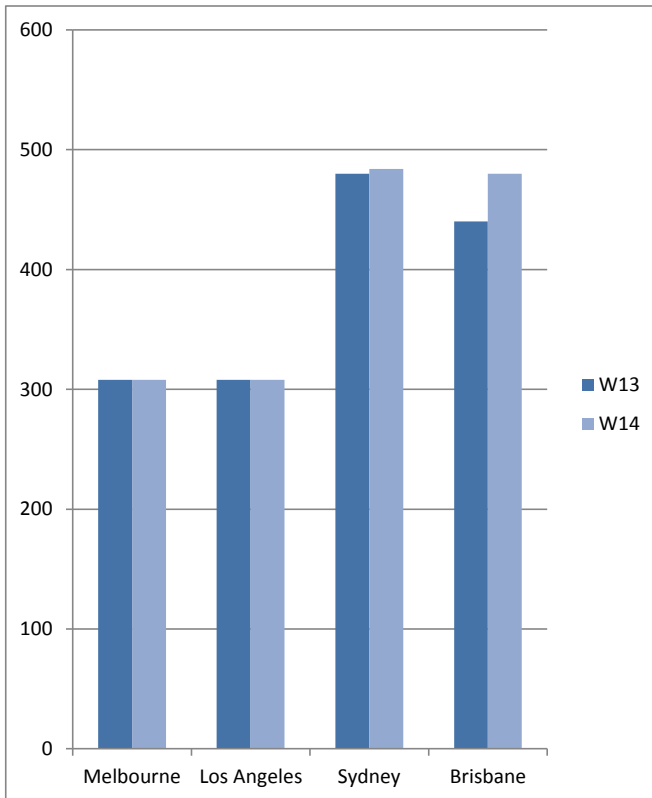


Top 10 Airlines by Air Seats

Airline	Seats
Air New Zealand	1,983,534
Qantas	451,080
Emirates	451,836
Virgin Australia	350,592
Jetsatr	223,020
Singapore Airlines	179,829
Lan Airlines	160,160
China Southern	139,992
Fiji Airways	88,784
Cathy Pacific	146,028
Other	513,496



Transit Routes - Air Transport Movements (ATMs)



Emirates (Dubai)	Seasonal		Peak Week	
	W13	W14	W13	W14
Sydney	308	308	14	14
Melbourne	308	308	14	14
Brisbane	308	308	14	14
EK Total	924	924	42	42

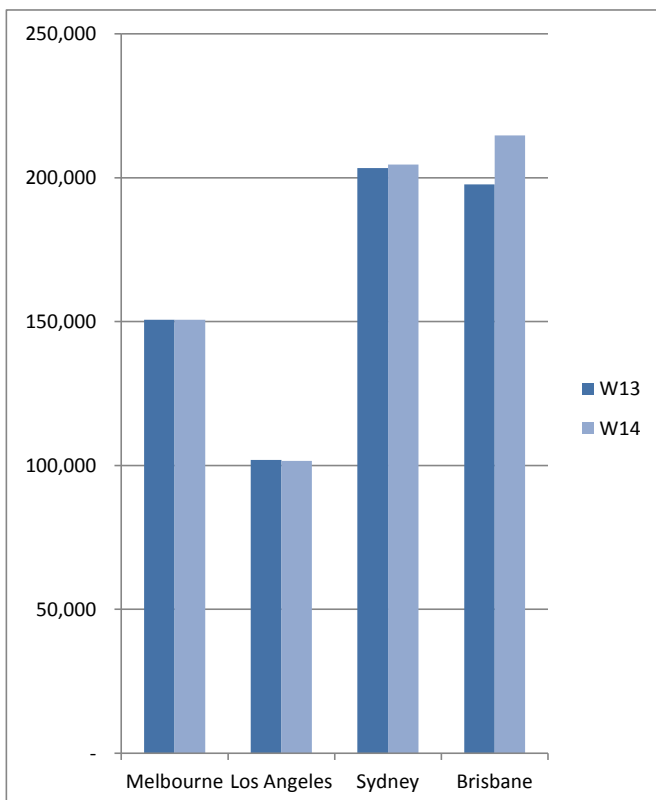
China Airlines (Taipei)				
	W13	W14	W13	W14
Sydney	172	176	8	8
Brisbane	132	172	6	8
CI Total	304	348	14	16

Air New Zealand (London Heathrow)				
	W13	W14	W13	W14
Los Angeles	308	308	14	14
NZ Total	308	308	14	14

Total transits for destinations served by more than one airline				
	W13	W14	W13	W14
Sydney	480	484	22	22
Brisbane	440	480	20	22

Total Transit Flights	1,536	1,580	70	72
-----------------------	-------	-------	----	----

Transit Routes - Seats



Emirates (Dubai)	Seasonal		Peak Week	
	W13	W14	W13	W14
Sydney	150,612	150,612	6,846	6,846
Melbourne	150,612	150,612	6,846	6,846
Brisbane	150,612	150,612	4,956	6,846
EK Total	451,836	451,836	18,648	20,538

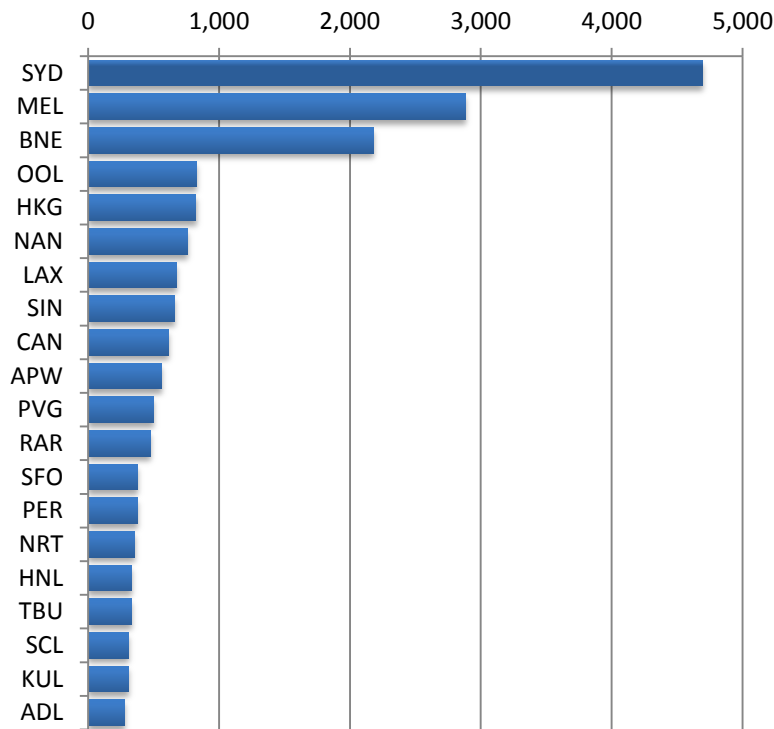
China Airlines (Taipei)				
	W13	W14	W13	W14
Sydney	52,804	54,032	2,456	2,456
Brisbane	47,084	64,102	2,334	3,112
CI Total	99,888	118,134	4,790	5,568

Air New Zealand (London Heathrow)				
	W13	W14	W13	W14
Los Angeles	101,924	101,592	4,648	4,648
NZ Total	101,924	101,592	4,648	4,648

Total transits for destinations served by more than one airline				
	W13	W14	W13	W14
Sydney	203,416	204,644	9,302	9,302
Brisbane	197,696	214,714	7,290	9,958

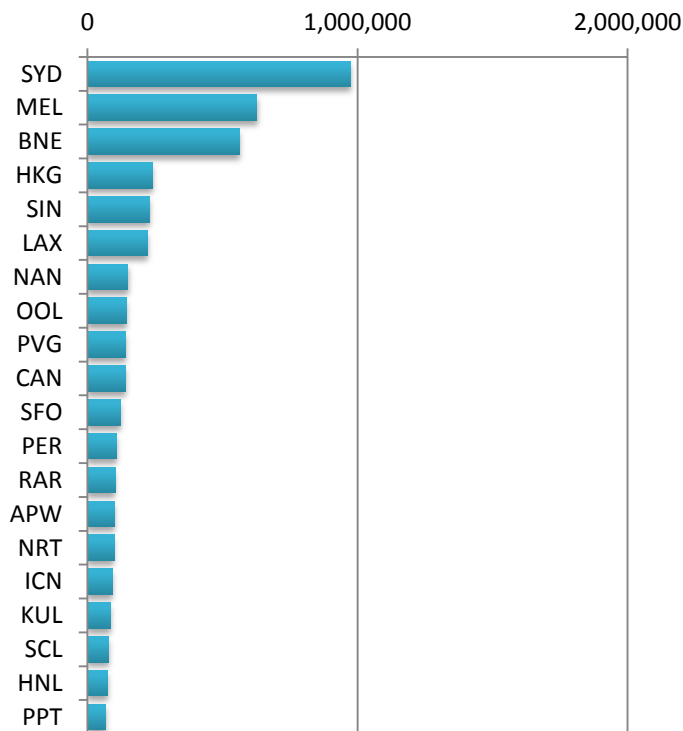
Total Transit Seats	653,648	671,562	28,086	30,754
---------------------	---------	---------	--------	--------

Air Transport Top 20 Movements by Destination



Destination	ATM'S
SYD	4,697
MEL	2,886
BNE	2,181
OOL	825
HKG	824
NAN	760
LAX	675
SIN	663
CAN	614
APW	558
PVG	496
RAR	476
SFO	379
PER	374
NRT	356
HNL	331
TBU	330
SCL	308
KUL	308
ADL	277

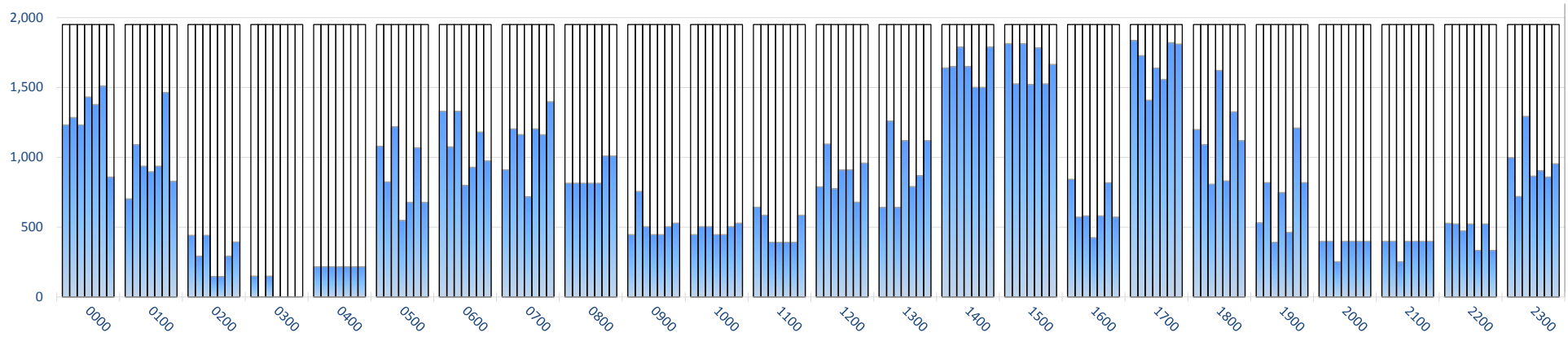
Air Transport Top 20 Seats by Destination



Destination	SEATS
SYD	974,750
MEL	627,830
BNE	563,904
HKG	239,660
SIN	230,997
LAX	221,748
NAN	150,342
OOL	144,688
PVG	142,550
CAN	139,992
SFO	122,526
PER	108,538
RAR	102,608
APW	100,608
NRT	98,626
ICN	92,216
KUL	86,856
SCL	80,080
HNL	75,078
PPT	66,888

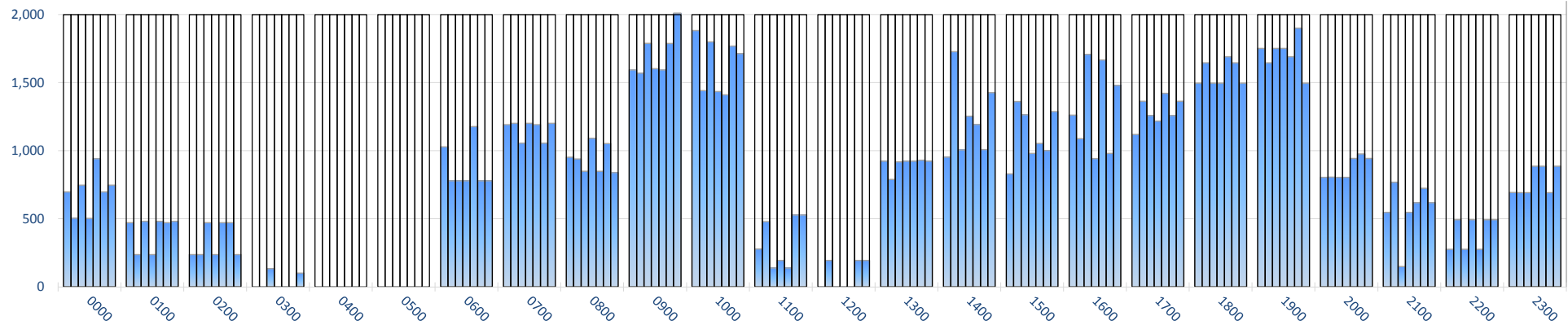
INTERNATIONAL TERMINAL ARRIVALS (PER 60 MINUTES, ROLLING EVERY 5 MINUTES)

Peak Week Movements per Hour - All times LOCAL



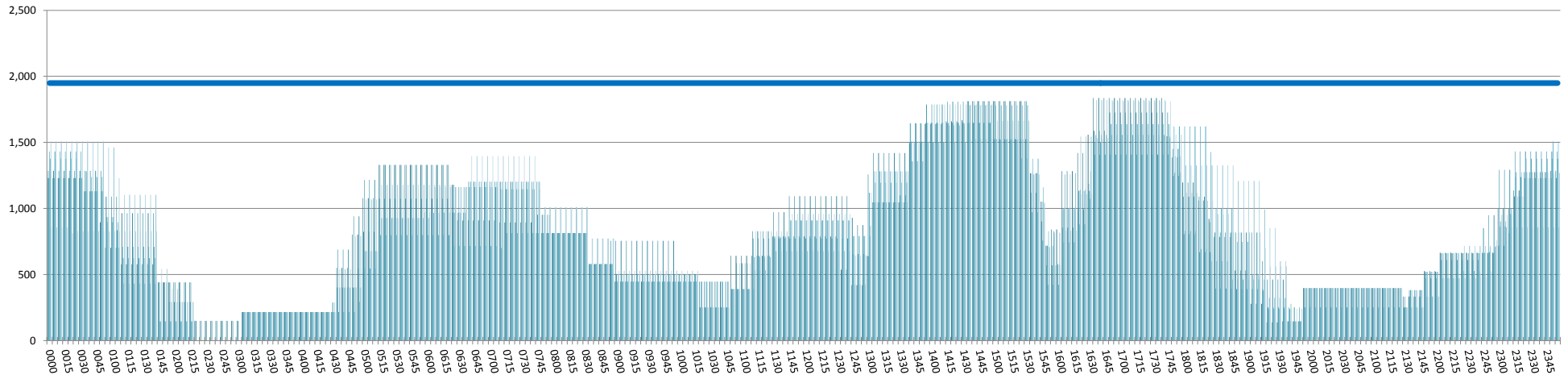
INTERNATIONAL TERMINAL DEPARTURES (PER 60 MINUTES, ROLLING EVERY 5 MINUTES)

Peak Week Movements per Hour - All times LOCAL



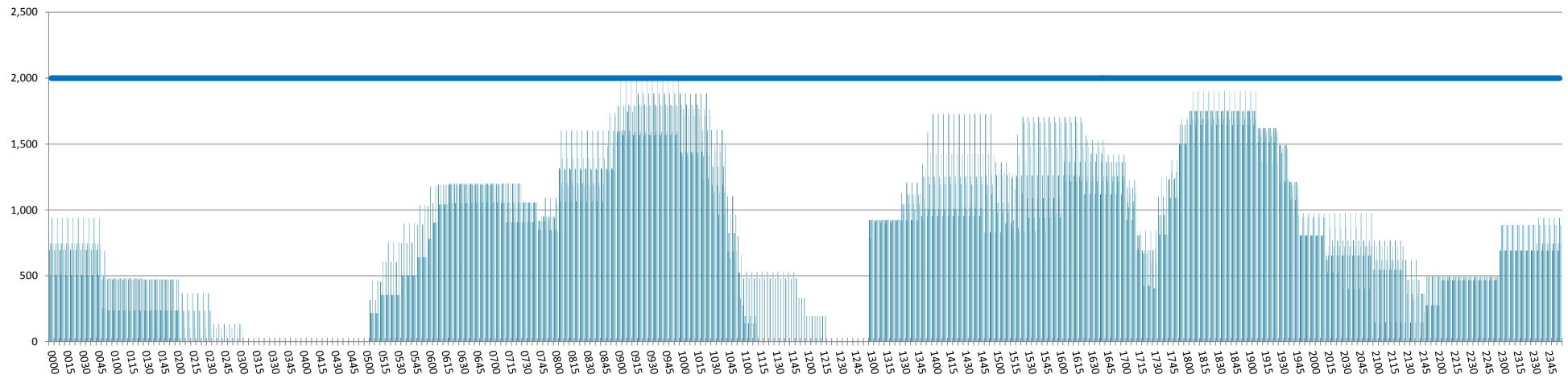
INTERNATIONAL TERMINAL ARRIVALS (PER 60 MINUTES, ROLLING EVERY 5 MINUTES)

Peak Week Movements per Hour - All times LOCAL



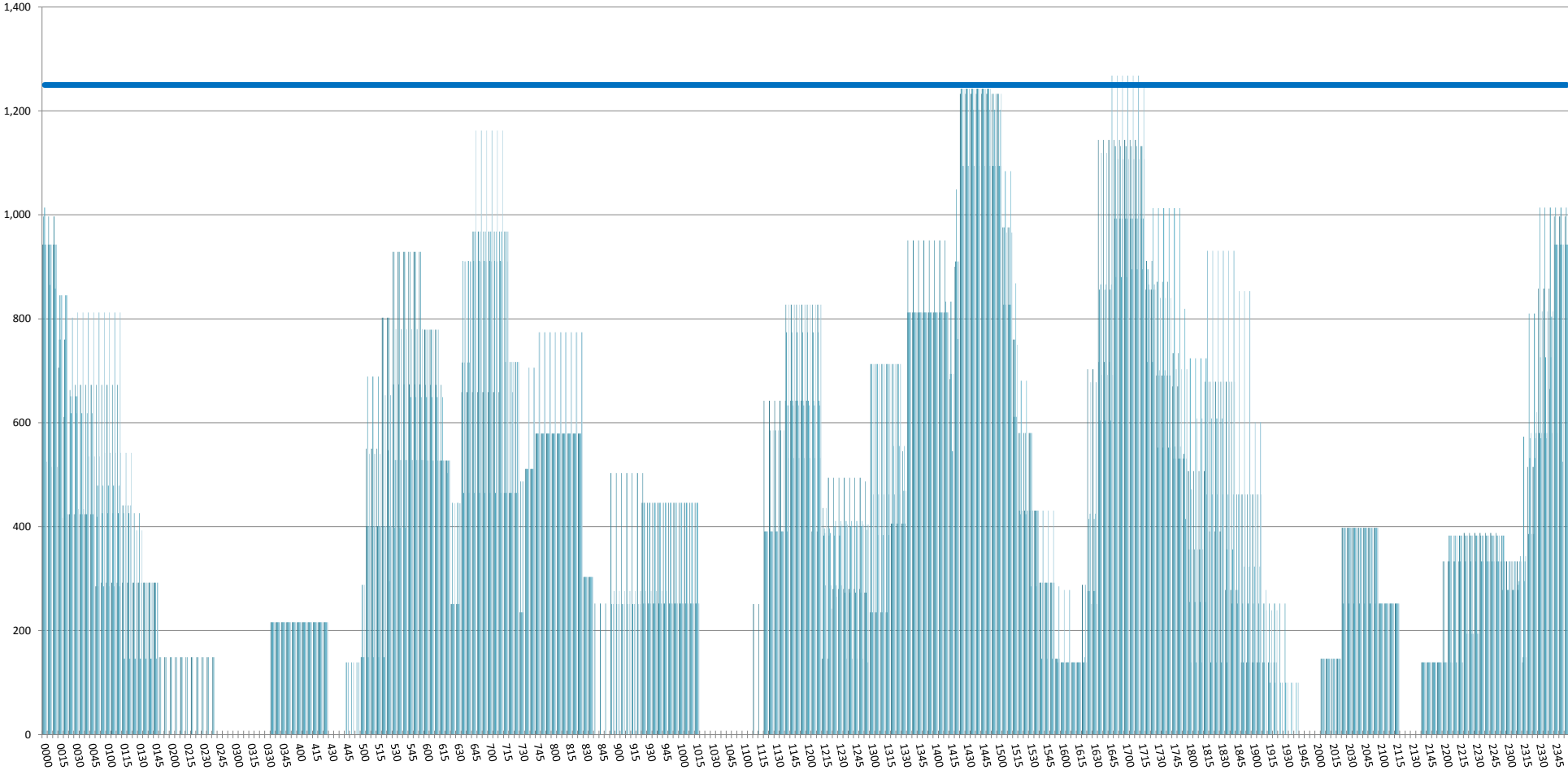
INTERNATIONAL TERMINAL DEPARTURES (PER 60 MINUTES, ROLLING EVERY 5 MINUTES)

Peak Week Movements per Hour - All times LOCAL



INTERNATIONAL TERMINAL ARRIVALS (PER 30 MINUTES, ROLLING EVERY 5 MINUTES)

Peak Week Movements - All times LOCAL



GLOSSARY OF TERMS

Air Transport Movement (ATM)	A scheduled or charter passenger or freight aircraft movement.
Allocation	The allocation of slots such that demand is constrained to fit within declared scheduling limits.
Common Travel Area (CTA)	Services to or from the Republic of Ireland and the Channel Islands.
Demand	The unconstrained demand for slots, prior to any schedule adjustments.
Passenger ATM	A scheduled or charter <u>passenger</u> aircraft movement (ie, excluding all-cargo aircraft movements).
Scheduling Limits	Limiting parameters declared by the Airport Operator used in the coordination process.
Seats	The number of seats based on the aircraft configuration advised by the airline.
Peak Week	The Peak Week for S14 is 22-28 December 2014
Data Snapshot	All data used for this report was as held 20 October 2014

GUIDE TO HISTOGRAMS

The histograms show the pattern of traffic by time of day against the appropriate scheduling limit. Each time period consist of seven columns representing the days-of-week, Monday through Sunday.